

Ort:

Düornbach

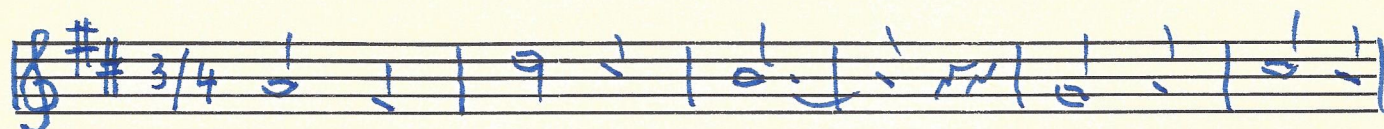
1924

Überlieferer:

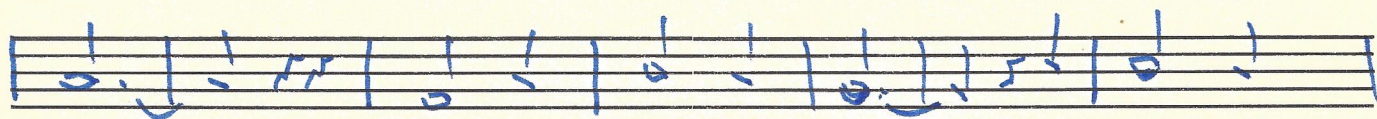
Aufzeichner und Einsender:

← Anton Szucsich

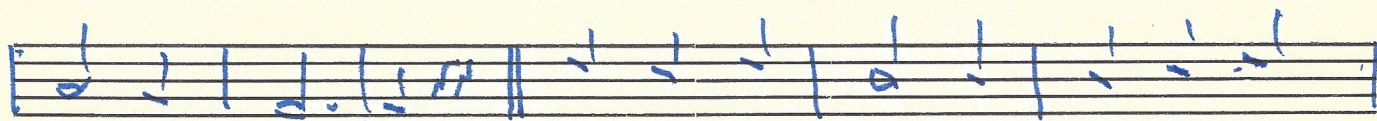
167/52

Ti si rajski cvijet..

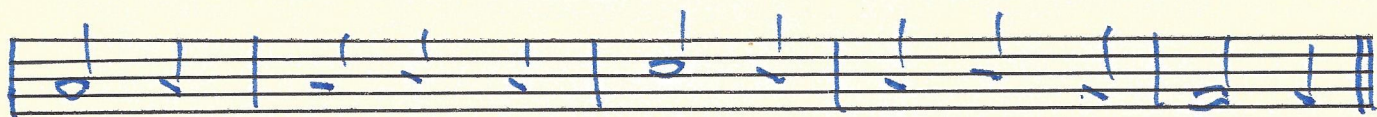
Ti si rajski cvijet, do zna cvijeli



cvijet, da te lju-bim ja od mo-je -



ga st-ra. Ar o-na sama, da nezna



mama roži-ce brala meni je j' dala.

2. Mila si mi ti,  
 Bar brade si ti,  
 Po sebi se zna,  
 Da si ti moja.  
 Ar ona sama, .....