

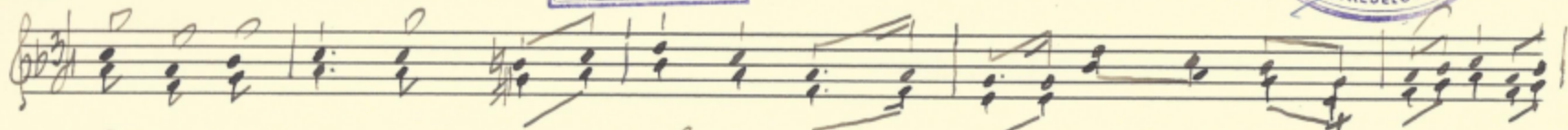
27

VOLENSPÄRCE  
80/4

Lepra, Alt.

Ein-Ausdruck für  
Volksmusik  
Ost- / Niederdonau

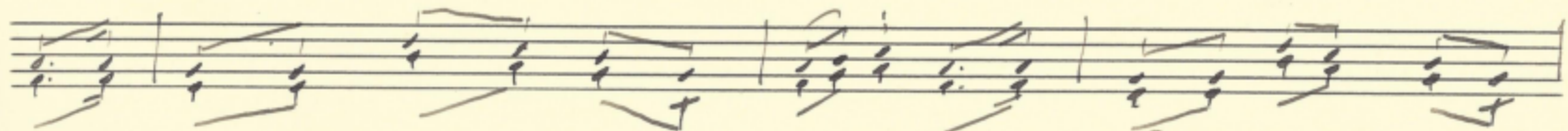
6



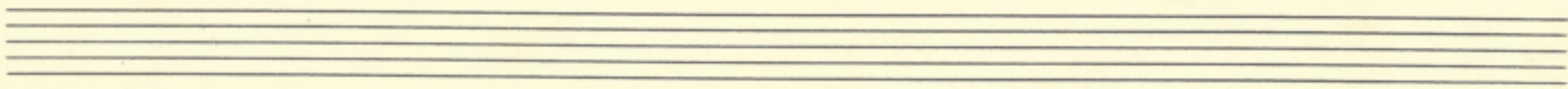
I Wir fangen an mit unserer Liede weil das alte Jahr zu Ende geht. Höret  
I Und zum Beschlusse wie alles wieder was an Leben. Soles soll nicht schaden hier auf



an was wir euch singere, wünskere ein glückseliges neues Jahr  
dieser Welt den Frieden nachher derwige Glückseligkeit



u. wir dankere noch in diesem Jahre unserem Gott für seine vieler  
u. vom Grund des Herzens wollen wir bitten das unser Gott dies Jahr auch nicht be-



4

Andante.

[= Wirfangen an]

BURGENLÄNDISCHES  
VOLKSLIEDARCHIV  
80/4

Handwritten musical score for a chamber ensemble. The score is written on seven staves, each with a different instrument label on the left. The music is in 3/4 time and consists of three measures, each divided into three parts (1, 2, 3). The notation includes notes, rests, and various performance markings such as slurs and accents.

**Clarinete I. II B.** (Clarinet I & II B): Treble clef, 3/4 time. Measures 1-3 show melodic lines with slurs and accents.

**Flügelhorn I. II.** (Flügelhorn I & II): Treble clef, 3/4 time. Measures 1-3 show harmonic accompaniment with slurs and accents.

**Bassklg.** (Bassoon): Treble clef, 3/4 time. Measures 1-3 show a steady rhythmic accompaniment.

**Viola.** (Viola): Treble clef, 3/4 time. Measures 1-3 show a steady rhythmic accompaniment.

**Tromba I. II. III.** (Trumpet I, II, III): Treble clef, 3/4 time. Measures 1-3 show harmonic accompaniment with slurs and accents.

**Bass.** (Bass): Bass clef, 3/4 time. Measures 1-3 show a steady rhythmic accompaniment.

Clarinet  
I. I. B.

Flügelk.  
I. II.

Flöte

Geige

Tromb.  
I. II. III. etc.

Bass.

The image shows a handwritten musical score for a symphony orchestra. The score is written on six staves, each labeled with an instrument: Clarinet (I. I. B.), Flügelk. (I. II.), Flöte, Geige, Tromb. (I. II. III. etc.), and Bass. The music is written in a single system, with various notes, rests, and dynamic markings. There are several double bar lines and slanted lines indicating section breaks or changes. The notation is dense and includes many accidentals and articulation marks. The paper is aged and yellowed.

24/1/1935.  
*[Signature]*  
 er.